

Facades available:

Callington, Eastwood, Harrogate

Kent, Lancaster, Sheffield

Swansea, Wiltshire

Overall home width 12.59m

Overall home length 18.59m

Residence 163.6m² 17.6sq

Garage 36.3m² 3.9sq

Porch 6.1m² 0.7sq

Total 205.9m² 22.2sq

Listed details based on Sheffield facade floorplan (illustrated)

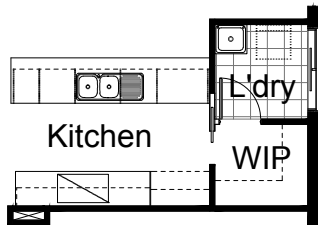
FLOORPLAN OPTIONS

We personalise our floorplans.

Talk to us about our huge range of ready-to-go design options or simply visit www.burbank.com.au/south-australia for more details.

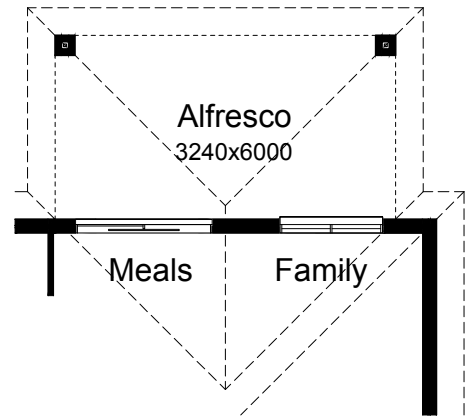
OPTION K1

Provide Kitchen upgrade with
1no. open shelf above refrigerator space,
1no. 800mm base cupboards,
2no. 700mm base cupboards,
1no 900mm base cupboard,
2no. 700mm overhead cupboards,
900mm underbench oven, 900mm cooktop with
900mm retractable range hood above,
1no. laminated DW provision,
1no. laminated MW provision with pot drawer below,
1no. 450mm drawers, 1no. 620mm cavity sliding door
to WIP in lieu of standard 620mm flush panel hinged
door, additional bench top and tiled splash back to suit
and relocate Laundry flush panel hinged door to suit.



OPTION EP1

Provide Alfresco to rear of dwelling including
additional 2no brick piers & earth floor to rear
Meals & Family.
Increases area by 19.44m².



OPTION LD1

Provide Laundry upgrade with laminated insert trough,
1no. 800mm base cupboard,
1no. 800mm overhead cupboard.
Amended tiled splash back and bench top to suit.



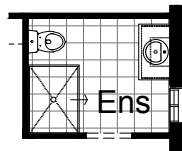
OPTION G1

Provide extension to Garage to
create additional Storage area.
Increases area by 4.56m².
Increases width by 850mm.



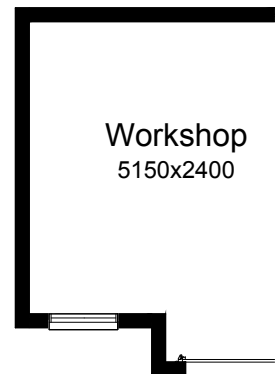
OPTION ENS1

Provide Ensuite upgrade with
900mm x 1220mm tiled shower base in lieu
of standard 900mm x 900mm tiled shower
base and 1no. 1800mm x 610mm aluminium
sliding window in lieu of standard 1027mm x
610mm aluminium sliding window and
relocate vanity and WC to suit. Provide
bulkhead opening to Bed 1 in lieu of hinged
door to WIR.



OPTION G2

Provide extension to Garage to create
Workshop area including additional
window to suit.
Increases width by 2400mm.
Increases area by 13.51m².



OPTION IP1

Provide Real Flame Inspire 900
gas fireplace, 400mm off floor
level in a 1400mm x 420mm
boxed out plaster wall with a 4
sided black fascia to Lounge room
side wall with additional 2no.
1800mm x 850mm aluminium
sliding window in lieu of standard
1no. 1800mm x 1810mm window.

